



COPY

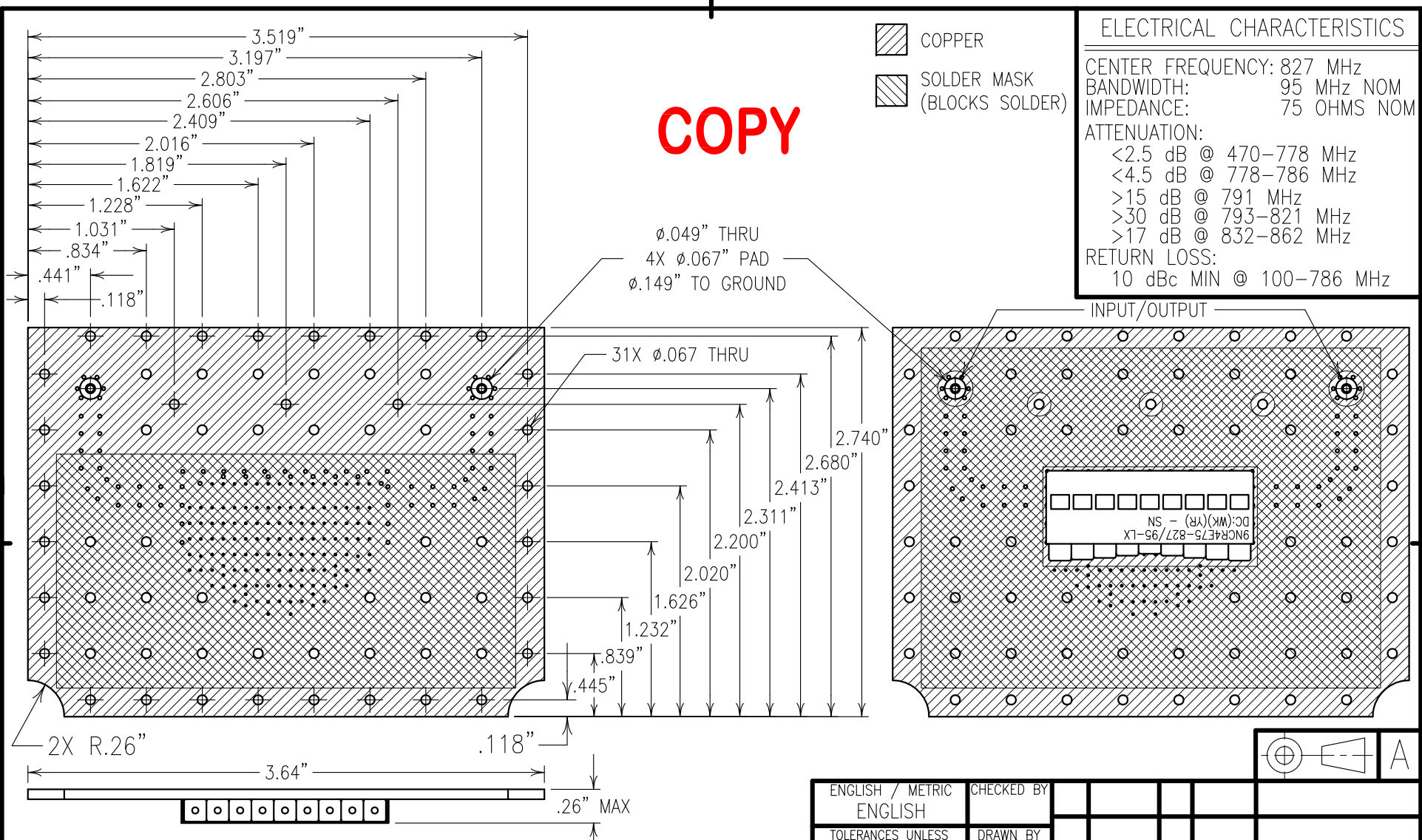
-  COPPER
-  SOLDER MASK (BLOCKS SOLDER)

ELECTRICAL CHARACTERISTICS

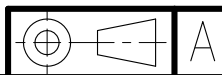
CENTER FREQUENCY: 827 MHz
 BANDWIDTH: 95 MHz NOM
 IMPEDANCE: 75 OHMS NOM

ATTENUATION:
 <2.5 dB @ 470-778 MHz
 <4.5 dB @ 778-786 MHz
 >15 dB @ 791 MHz
 >30 dB @ 793-821 MHz
 >17 dB @ 832-862 MHz

RETURN LOSS:
 10 dBc MIN @ 100-786 MHz




DC: (WK) (YR) - SN
 9NCR4E75-827/95-LX



Confidential and Proprietary information of ComNav Engineering Inc. Do Not Duplicate or Use Without Permission. ComNav Engineering Inc. claims Copyright in this document as of the Creation, last revision, and last updated dates. All Rights Reserved.

NOTES: RECOMMENDED ATTACHMENT METHOD:	MAX. TEMP.(°C)	TIME (SECONDS)
SILVER EPOXY OR REFLOW NOT TO EXCEED:	215	90
TUNE FILTER TO 75 OHMS	230	60
USE TEST FIXTURE TF0079 WHEN TUNING.	245	30
FILTER IS ROHS COMPLIANT.	260	15
FILTER MAY BE LABELED OR ETCHED.		

ENGLISH / METRIC ENGLISH	CHECKED BY				
TOLERANCES UNLESS OTHERWISE SPECIFIED MACHINED SURFACES TO BE 125 / OR BETTER REMOVE ALL BURRS	DRAWN BY PBF	II	11DEC12	KJR	DEV. INI. ISS. PER 3604
	ENGINEER KJR	REV	DATE	BY	DCN No. REMARKS
ENGLISH (INCHES) .XX ±.02 .XXX ±.01	METRIC (MM) .X ±.25 .XX ±.13	SCALE 1:1	APPLIC: CERAMIC COAXIAL FILTER		
ANGLES ± 0° 30'	DATE 21DEC12	TITLE: 9NCR4E75-827/95-LX			
	FINISH: BOARD: NI/AU JACKET: NI/SILVER RESONATOR: SILVER	DRAWING No. OL1324	SHEET/OF 1/1		