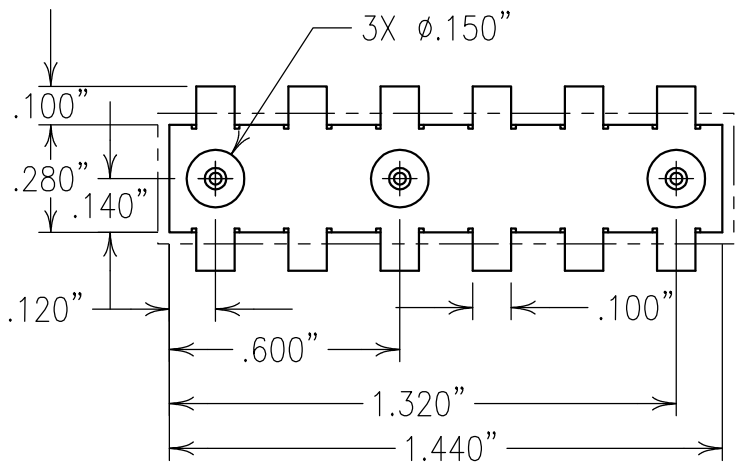


COPY



----- 0.030" CLEARANCE ZONE

ELECTRICAL CHARACTERISTICS		
	RX	TX
CENTER FREQUENCY:	1950 MHz	2140 MHz
PASSBAND:	1920-1980 MHz	2110-2170 MHz
REJECTION:		
25 dB MIN:	2110-2170 MHz	
30 dB MIN.:		1920-1980 MHz
INSERTION LOSS:	<2.0 dB	<1.3 dB
TX INSERTION LOSS AND TX REJECTION APPLY TO THE TX TO ANTENNA PATH.		
RX INSERTION LOSS AND RX REJECTION APPLY TO THE RX TO ANTENNA PATH.		
POWER HANDLING: THE TX TO ANTENNA MUST WITHSTAND 8 WATTS (+29 dBm) CW OVER THE TEMPERATURE RANGE OF -20 TO +85°C. THE ANTENNA TO RX PATH MUST WITHSTAND 0 dBm.		
IMPEDANCE: 50 OHMS AT ALL THREE PORTS.		

Confidential and Proprietary information of ComNav Engineering Inc. Do Not Duplicate or Use Without Permission. ComNav Engineering Inc. claims Copyright in this document as of the Creation, last revision, and last updated dates. All Rights Reserved.

NOTES:
1) DC: IS ON ONE SIDE ONLY.

FILTER IS ROHS COMPLIANT

ENGLISH / METRIC ENGLISH		CHECKED BY					
TOLERANCES UNLESS OTHERWISE SPECIFIED		DRAWN BY		A	11AUG09	KJR	DEV. INI. ISS. PER 3097
MACHINED SURFACES TO BE 125 OR BETTER REMOVE ALL BURRS		ENGINEER		II	16MAY08	KJR	DEV. INI. ISS. PER 2884
		REV	DATE	BY	DCN No.	REMARKS	
ENGLISH (INCHES)	METRIC (MM)	SCALE		APPLIC: CERAMIC COAXIAL FILTER			
.XX ±.02	.X ±.5	2:1					
.XXX ±.010	.XX ±.25	DATE		TITLE: 6DCR6B-1950/2140/100-DX			
ANGLES ± 0° 30'		11AUG09					
FINISH:		PINS: TIN PLATED BRASS		DRAWING No.		SHEET OF 1 1	
		JACKET: NI/SILVER		0L0884			
		RESONATOR: SILVER					

