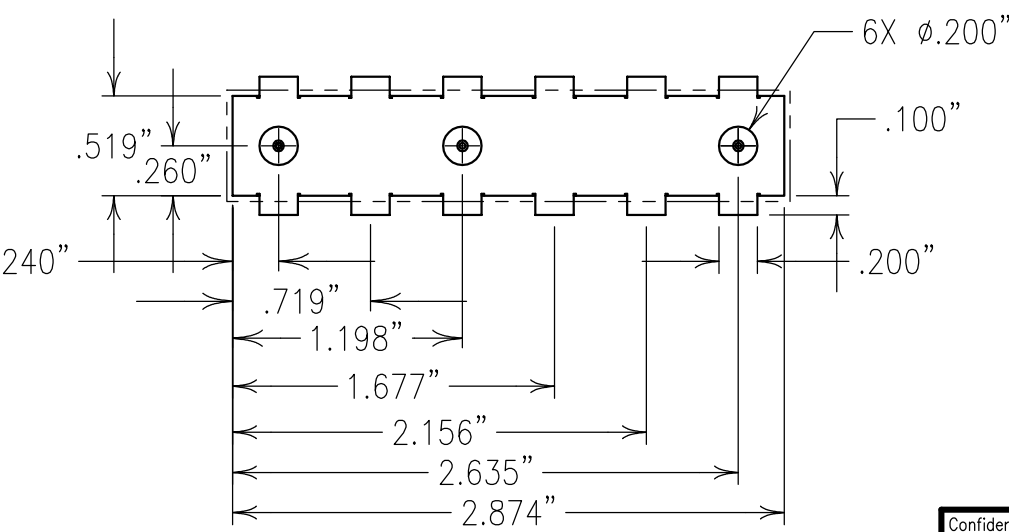


COPY



ELECTRICAL CHARACTERISTICS		
	RX	TX
CENTER FREQUENCY:	455 MHz	465 MHz
PASSBAND:	452.5-457.6 MHz	462.5-467.6 MHz
REJECTION:		
25 dB MIN:	462.5-467.6 MHz	
30 dB MIN.:		452.5-457.6 MHz
INSERTION LOSS:	<2.0 dB	<1.6 dB
TX INSERTION LOSS AND TX REJECTION APPLY TO THE TX TO ANTENNA PATH.		
RX INSERTION LOSS AND RX REJECTION APPLY TO THE RX TO ANTENNA PATH.		
POWER HANDLING: THE TX TO ANTENNA MUST WITHSTAND 25 WATTS CW OVER THE TEMPERATURE RANGE OF -20 TO +85°C. THE ANTENNA TO RX PATH MUST WITHSTAND 0 dBm.		
IMPEDANCE: 50 OHMS AT ALL THREE PORTS.		

Confidential and Proprietary information of ComNav Engineering Inc. Do Not Duplicate or Use Without Permission. ComNav Engineering Inc. claims Copyright in this document as of the Creation, last revision, and last updated dates. All Rights Reserved.								A	
ENGLISH / METRIC ENGLISH		CHECKED BY	C	11AUG09	KJR	DEV.	GEN. REV. PER 3097		
TOLERANCES UNLESS OTHERWISE SPECIFIED		DRAWN BY	B	31OCT08	KJR	DEV.	GEN. REV. PER 2958		
MACHINED SURFACES TO BE 125 OR BETTER REMOVE ALL BURRS		ENGINEER	A	06AUG08	KJR	DEV.	GEN. REV. PER 2915		
		REV		DATE	BY	DCN No.	REMARKS		
ENGLISH (INCHES)	METRIC (MM)	SCALE	APPLIC: CERAMIC COAXIAL FILTER						
.XX ±.02	.X ±.5	1:1	TITLE: 6DCR12E-455/465/Z-DX						
.XXX ±.010	.XX ±.25	DATE	11AUG09						
ANGLES ± 0° 30'		FINISH:		PINS: TIN PLATED BRASS JACKET: NI/SILVER RESONATOR: SILVER			DRAWING No.		SHEET OF
FILTER IS ROHS COMPLIANT		COMNAV ENGINEERING INC.		0L0878			1 1		

NOTES:
 1) DC: IS ON ONE SIDE ONLY.
 ----- 0.030" CLEARANCE ZONE