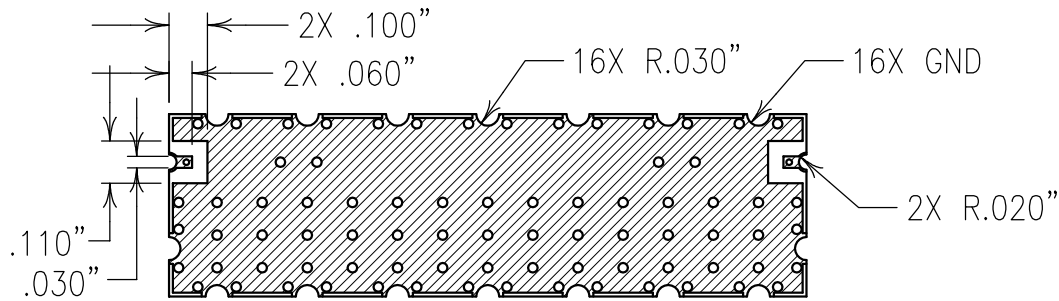
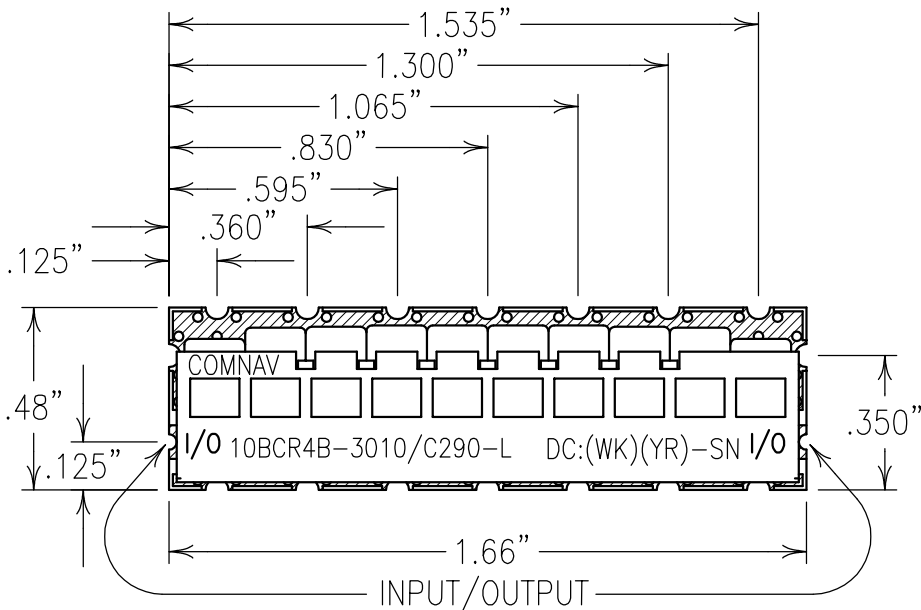
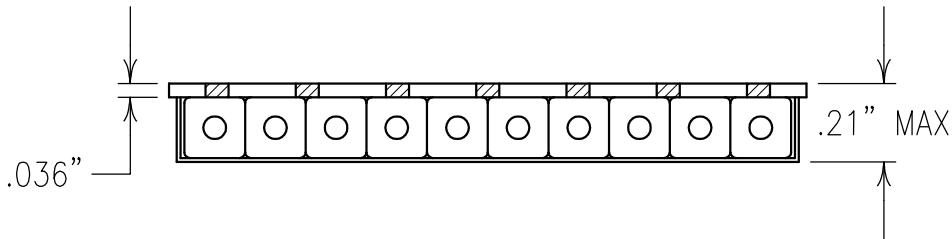


2

1



COPY



ELECTRICAL CHARACTERISTICS

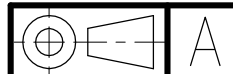
CENTER FREQUENCY:	3010 MHz NOM
INSERTION LOSS:	2.25 dB NOM
PASSBAND:	2895-3125 MHz
PASSBAND FLATNESS:	1.0 dB
VSWR:	1.5:1
REJECTION:	
40 dBc:	DC-2820 MHz
30 dBc:	3160-3220 MHz
POWER:	+20 dBm
TEMPERATURE:	0° TO +60° C

NOTES:

RECOMMENDED ATTACHMENT METHOD: SILVER EPOXY OR REFLOW NOT TO EXCEED AS INDICATED BELOW:

TEMP.(°C)	MAX.TIME(SEC)
215	90
230	60
245	30
260	15

FILTER IS ROHS COMPLIANT.
 FILTER MAY BE LABELED OR ETCHED.



Confidential and Proprietary information of ComNav Engineering Inc. Do Not Duplicate or Use Without Permission. ComNav Engineering Inc. claims Copyright in this document as of the Creation, last revision, and last updated dates. All Rights Reserved.

ENGLISH / METRIC ENGLISH	CHECKED BY				
TOLERANCES UNLESS OTHERWISE SPECIFIED	DRAWN BY	A	12MAY08	KJR	DEV. GEN. REV. PER 2878
MACHINED SURFACES TO BE 125 / OR BETTER REMOVE ALL BURRS	ENGINEER	II	08APR08	KJR	DEV. INI. ISS. PER 2865
	KJR	REV	DATE	BY	DCN No. REMARKS

ENGLISH (INCHES)	METRIC (MM)	SCALE	APPLIC:
.XX ±.02 .XXX ±.010	.X ±.5 .XX ±.25	2:1	CERAMIC COAXIAL FILTER
ANGLES ± 0° 30'	DATE	TITLE:	
	12MAY08	10BCR4B-3010/C290-L	

	FINISH:	DRAWING No.	SHEET OF 1 1
	BOARD: NICKEL/GOLD RESONATOR: SILVER JACKET: NICKEL/SILVER	0L0868	