

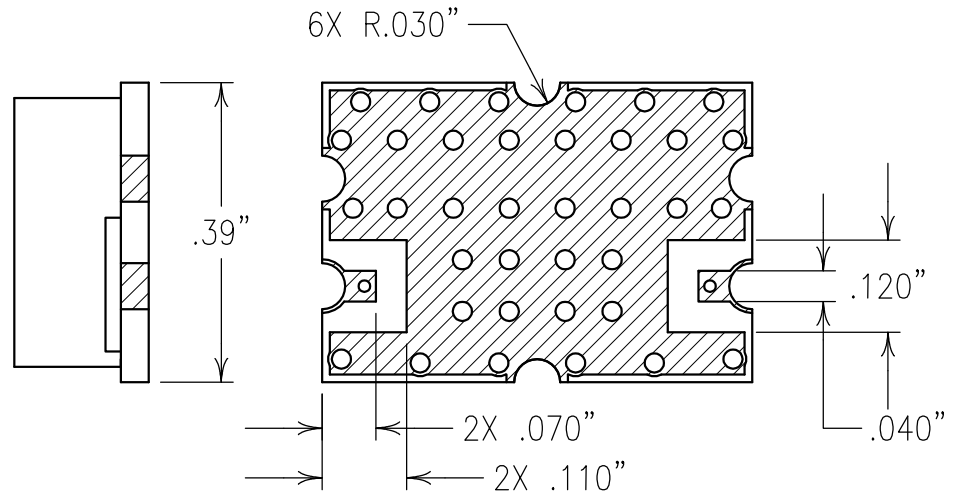
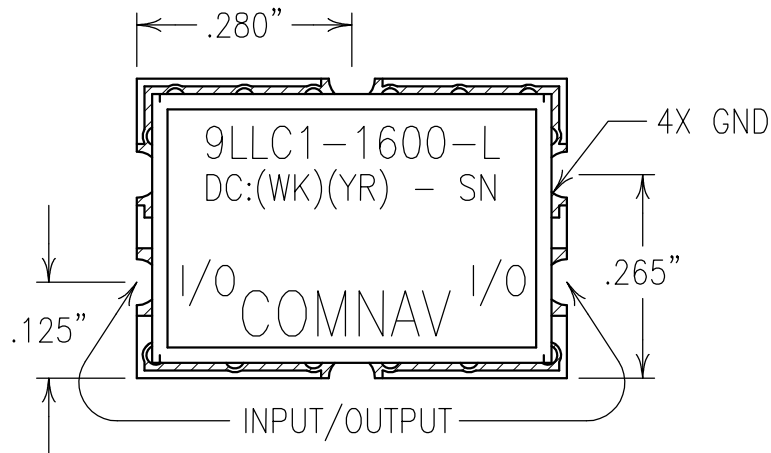
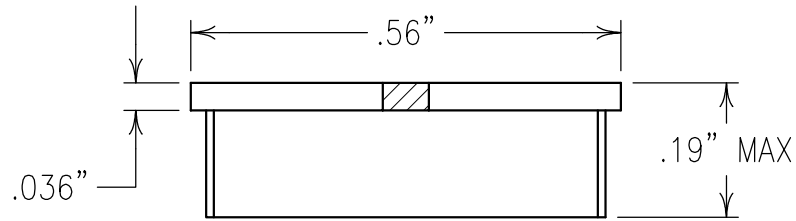
2

1

ELECTRICAL CHARACTERISTICS

CUTOFF FREQUENCY: 1600 MHz NOM
 RETURN LOSS: 1.5:1
 PASSBAND FLATNESS:
 0.4 dB: 280-300 MHz
 0.4 dB: 1310-1410 MHz
 PASSBAND LOSS: 1.0 dB NOM
 REJECTION:
 50 dBc MIN @ 1920-4000 MHz
 POWER: +20 dBm
 TEMPERATURE: 0° TO +60° C

COPY



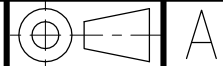
NOTES:

RECOMMENDED ATTACHMENT METHOD: SILVER EPOXY
 OR REFLOW NOT TO EXCEED AS INDICATED BELOW:
 TEMP.(°C) MAX. TIME(SEC)

215	90
230	60
245	30
260	15

FILTER MAY BE LABELED OR ETCHED.
 FILTER IS ROHS COMPLIANT.

Confidential and Proprietary information of ComNav Engineering Inc. Do Not Duplicate or Use Without Permission. ComNav Engineering Inc. claims Copyright in this document as of the Creation, last revision, and last updated dates. All Rights Reserved.



ENGLISH / METRIC ENGLISH	CHECKED BY				
TOLERANCES UNLESS OTHERWISE SPECIFIED	DRAWN BY				
MACHINED SURFACES TO BE 125 / OR BETTER REMOVE ALL BURRS	ENGINEER	II	08APR08	KJR	DEV. INI. ISS. PER 2865
ENGLISH (INCHES)	SCALE	4:1	APPLIC: CHIP AND WIRE FILTER		
METRIC (MM)	DATE	14APR08	TITLE: 9LLC1-1600-L		
.XX ±.02 .XXX ±.010	ANGLES ± 0° 30'	FINISH: BOARD: NI/GOLD JACKET: NI/SILVER RESONATOR: SILVER		DRAWING No. 0L0864	
				SHEET OF 1 1	