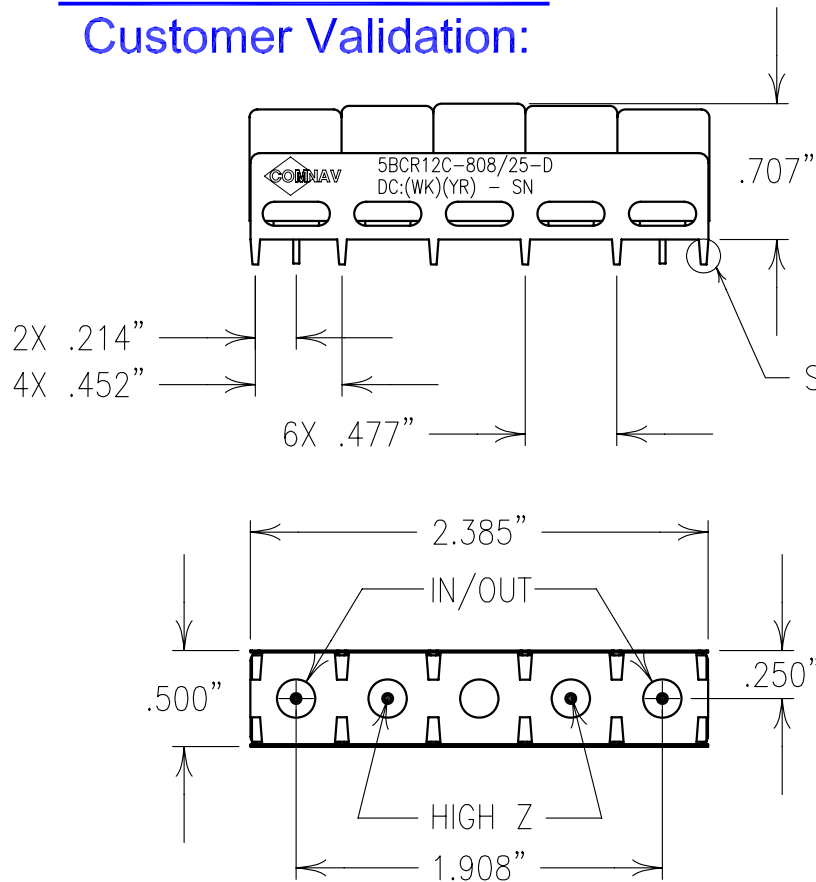
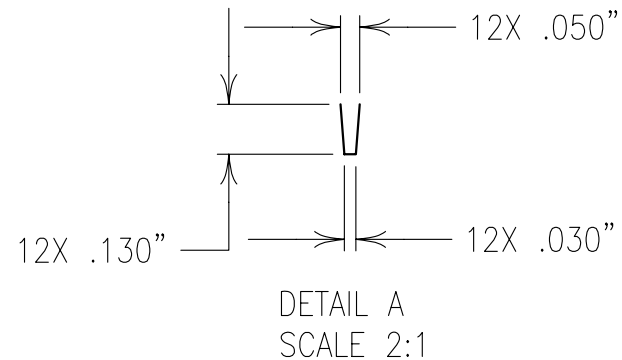
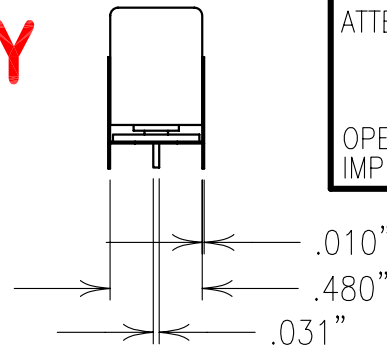


Customer Validation:



COPY

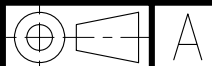


ELECTRICAL CHARACTERISTICS

CENTER FREQUENCY:	808 MHz
PASSBAND FREQ.:	799-817 MHz
PASSBAND ATTEN.:	<1.5 dB
PASSBAND RIPPLE:	<0.5 dB
PASSBAND VSWR:	1.5:1 MAX.
ATTENUATION:	
>70 dB:	688.8-706.8 MHz
>50 dB:	851-862 MHz
>50 dB:	769-776 MHz
OPERATING TEMP.:	-30° TO +75°C
IMPEDANCE:	50 OHMS IN/OUT

B

Confidential and Proprietary information of ComNav Engineering Inc. Do Not Duplicate or Use Without Permission. ComNav Engineering Inc. claims Copyright in this document as of the Creation, last revision, and last updated dates. All Rights Reserved.



NOTES:

DC: IS ON ONE SIDE ONLY.

PART MAY BE EXPOSED TO 240°C FOR 30 SEC.,
OR 260°C FOR 15 SEC.
FOR BEST RESULTS HAND OR WAVE SOLDERING IS SUGGESTED.

FOR RECOMMENDED FOOTPRINT SEE FP0076.

ENGLISH / METRIC ENGLISH	CHECKED BY				
TOLERANCES UNLESS OTHERWISE SPECIFIED	DRAWN BY	II	26OCT07	KJR	DEV.
MACHINED SURFACES TO BE 125 /OR BETTER	ENGINEER				INI. ISS. PER 2767
REMOVE ALL BURRS	KJR	REV	DATE	BY	DCN No.
ENGLISH (INCHES)	METRIC (MM)	SCALE	APPLIC: CERAMIC COAXIAL FILTER		
.XX ±.02	.X ±.50	1:1	TITLE: 5BCR12C-808/25-D		
.XXX ±.010	.XX ±.25	DATE	DRAWING No. 0L0794		
ANGLES ± 0° 30'	06NOV07	FINISH: JACKET: NI/SILVER RESONATOR: SILVER PINS: TIN PLATED		SHEET OF 1 1	

A