

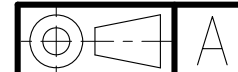
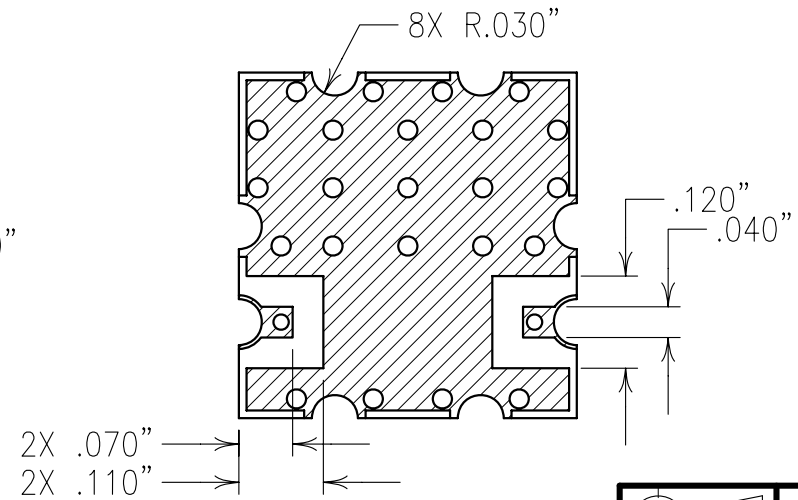
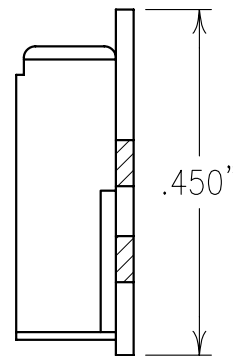
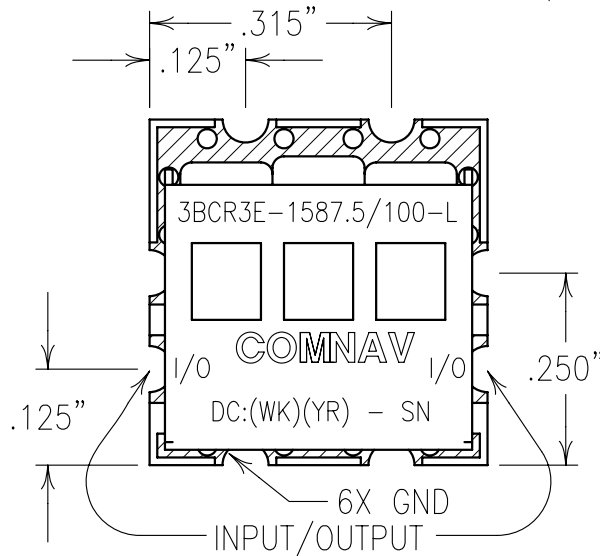
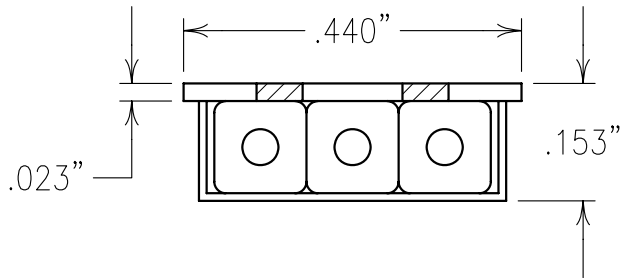
2

1

### ELECTRICAL CHARACTERISTICS

CENTER FREQUENCY:	1587.5 MHz
PASSBAND:	1565-1610 MHz
3 dB BANDWIDTH:	100 MHz NOM
INSERTION LOSS:	<1.3 dB
PASSBAND FLATNESS:	<0.5 dB
VSWR:	1.5:1 TYP.
REJECTION:	
1490 MHz:	>15 dBc
1685 MHz:	>15 dBc
1390 MHz:	>35 dBc
1785 MHz:	>30 dBc

**COPY**



Confidential and Proprietary information of ComNav Engineering Inc. Do Not Duplicate or Use Without Permission. ComNav Engineering Inc. claims Copyright in this document as of the Creation, last revision, and last updated dates. All Rights Reserved.

NOTES:

RECOMMENDED ATTACHMENT METHOD: SILVER EPOXY OR REFLOW NOT TO EXCEED AS INDICATED BELOW:

TEMP.(°C)	MAX.TIME(SEC)
215	90
230	60
245	30
260	15

FILTER IS ROHS COMPLIANT.  
 FILTER MAY BE ETCHED OR LABELED.

ENGLISH / METRIC ENGLISH	CHECKED BY				
TOLERANCES UNLESS OTHERWISE SPECIFIED	DRAWN BY				
MACHINED SURFACES TO BE 125 OR BETTER	PBF	II	31AUG06	KJR	DEV.
REMOVE ALL BURRS	ENGINEER	REV	DATE	BY	DCN No.
	KJR				REMARKS
ENGLISH (INCHES)	METRIC (MM)	SCALE	APPLIC: CERAMIC COAXIAL FILTER		
.XX ±.02	.X ±.5	4:1	TITLE: 3BCR3E-1587.5/100-L		
.XXX ±.010	.XX ±.25	DATE	DRAWING No.		
ANGLES ± 0° 30'		13SEP06	0L0673		
FINISH:		BOARD: NICKEL/GOLD PLATED COPPER		SHEET OF	
JACKET: NICKEL/SILVER		RESONATOR: SILVER		1 1	