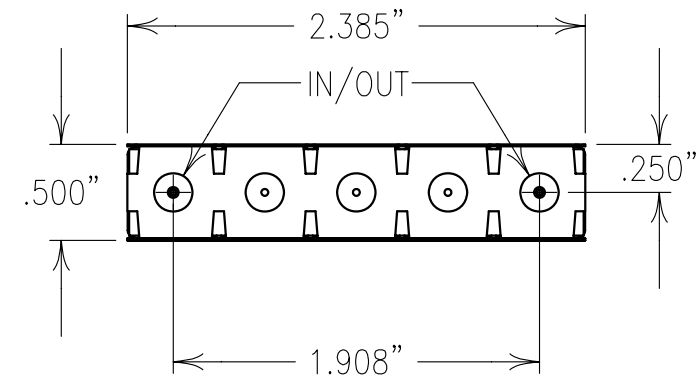
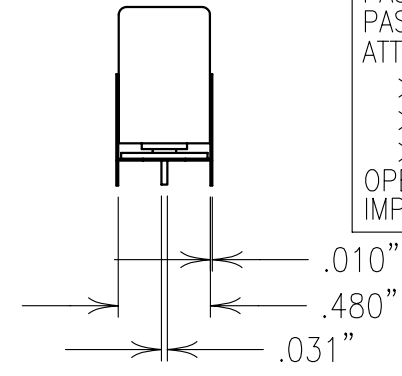
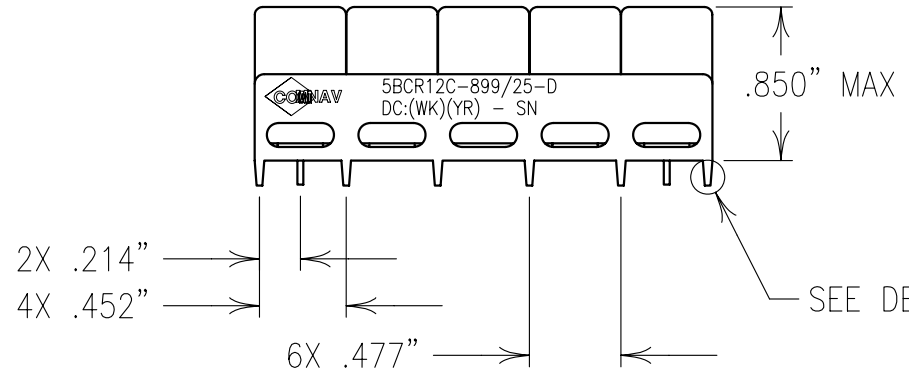
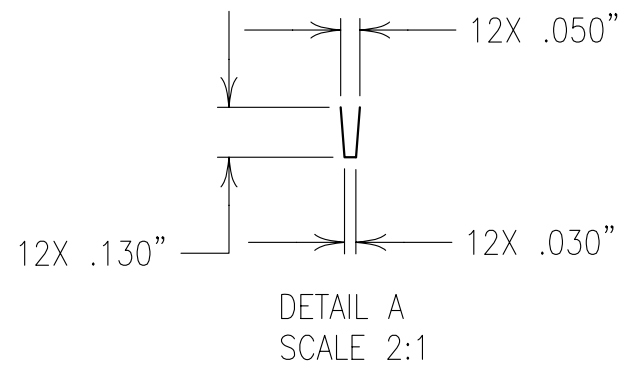


ELECTRICAL CHARACTERISTICS	
CENTER FREQUENCY:	899 MHz
PASSBAND:	896-902 MHz
PASSBAND ATTN.:	1.5 dB MAX
PASSBAND RIPPLE:	0.5 dB MAX
PASSBAND VSWR:	1.5:1 MAX.
ATTENUATION:	
>40 dB:	860-866 MHz
>70 dB:	752-758 MHz
>50 dB:	935-941 MHz
OPERATING TEMP.:	-30° TO +75°C
IMPEDANCE:	50 OHMS IN/OUT



COPY



NOTES:
DC: IS ON ONE SIDE ONLY.
PART MAY BE EXPOSED TO 240°C FOR 30 SEC.,
OR 260°C FOR 15 SEC.
FOR BEST RESULTS HAND OR WAVE SOLDERING IS SUGGESTED.
FOR RECOMMENDED FOOTPRINT SEE FP0076.

FILTER IS ROHS COMPLIANT.
FILTER MAY BE ETCHED OR LABELED.

Confidential and Proprietary information of ComNav Engineering Inc. Do Not Duplicate or Use Without Permission. ComNav Engineering Inc. claims Copyright in this document as of the Creation, last revision, and last updated dates. All Rights Reserved.					
ENGLISH / METRIC ENGLISH	CHECKED BY				
TOLERANCES UNLESS OTHERWISE SPECIFIED	DRAWN BY	II	23MAR06	KJR	DEV.
MACHINED SURFACES TO BE 125 / OR BETTER	ENGINEER	REV	DATE	BY	DCN No.
REMOVE ALL BURRS	KJR				REMARKS
ENGLISH (INCHES) .XX ±.02 .XXX ±.010	METRIC (MM) .X ±.50 .XX ±.25	SCALE 1:1	APPLIC: CERAMIC COAXIAL FILTER		
ANGLES ± 0° 30'	DATE 23MAR06	TITLE: 5BCR12C-899/25-D			
	FINISH: JACKET: NI/SILVER RESONATOR: SILVER PINS: TIN PLATED	DRAWING No. 0L0642		SHEET OF 1 1	