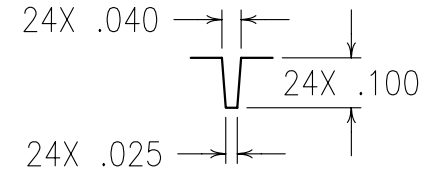
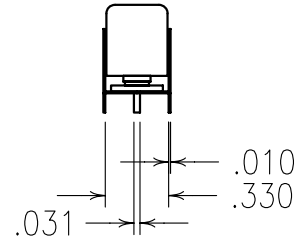
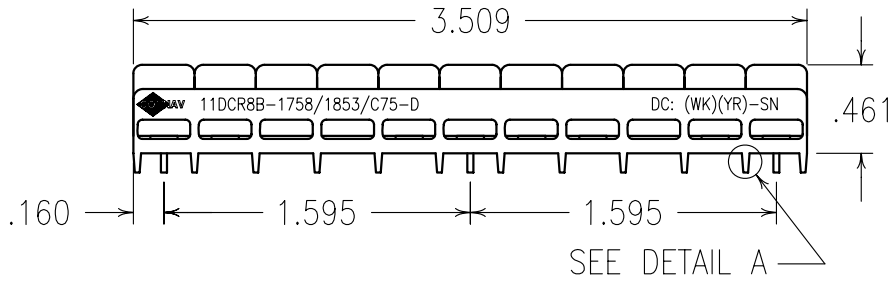


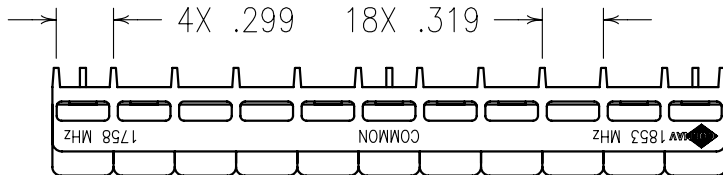
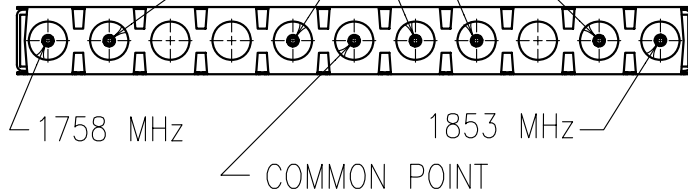
2

1



DETAIL A
SCALE 2:1

HIGH IMPEDANCE POINTS (NOTE 1)

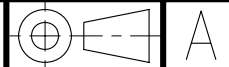


COPY

ELECTRICAL CHARACTERISTICS

	CHANNEL1	CHANNEL2
CENTER FREQUENCY(MHz):	1758	1853
PASSBAND(MHz):	1731-1785	1731-1785
PASSBAND @ 3 dB(MHz):	75 NOM	75 NOM
PASSBAND INSERTION LOSS(dB):	<1.5	<1.5
PASSBAND VSWR:	<1.5:1	<1.5:1
REJECTION >30 dBc(MHz):	DC-1674	1937-3000
REJECTION >50 dBc(MHz):	1826-1880	1731-1785

Confidential and Proprietary information of ComNav Engineering Inc. Do Not Duplicate or Use Without Permission. ComNav Engineering Inc. claims Copyright in this document as of the Creation, last revision, and last updated dates. All Rights Reserved.



NOTES:

NOTE 1 THERE MUST BE A MINIMUM OF .050 AIR BETWEEN GROUND AND HIGH IMPEDANCE POINTS. THIS MAY BE DONE BY RAISING THE FILTER OR BY DRILLING OUT THE BOARD.

HAND OR WAVE SOLDERING.

MAX REFLOW TEMP. 240°C FOR 30 SEC., OR 260°C FOR 15 SEC.

FOR RECOMMENDED FOOTPRINT SEE FP0044.

FILTER IS ROHS COMPLIANT.
FILTER MAY BE LABELED OR ETCHED.

ENGLISH / METRIC ENGLISH	CHECKED BY					
TOLERANCES UNLESS OTHERWISE SPECIFIED MACHINED SURFACES TO BE 125 / OR BETTER REMOVE ALL BURRS	DRAWN BY PBF	A	10JUL06	PBF	DEV.	GEN. REV. PER 2551
	ENGINEER KJR	II	11MAY05	MJG	DEV.	INI. ISS. PER 2371
	SCALE 1:1	REV	DATE	BY	DCN No.	REMARKS
ENGLISH (INCHES) .XX ±.02 XXX ±.010	METRIC (MM) .X ±.25 .XX ±.13	APPLIC: CERAMIC COAXIAL FILTER				
ANGLES ± 0° 30'	DATE 11AUG06	TITLE: 11DCR8B-1758/1853/C75-D				



FINISH:
BOARD:NI/GOLD
JACKET:NI/SILVER
RESONATOR:SILVER

DRAWING No. 0L0593
SHEET OF 1 1