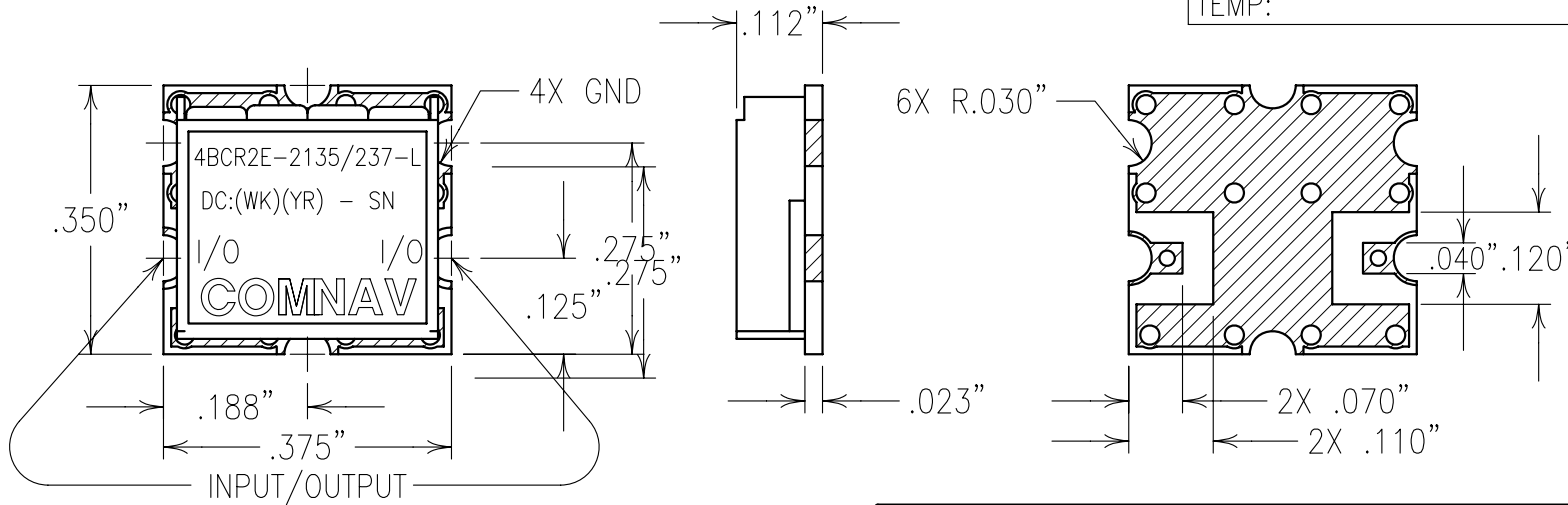
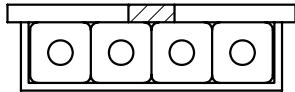


**COPY**

ELECTRICAL CHARACTERISTICS

CENTER FREQUENCY:	2135 MHz
PASSBAND:	2040-2230 MHz
PASSBAND INSERTION LOSS:	3 dB MAX
REJECTION:	
-40 dBc:	1000-1770 MHz
-40 dBc:	2600-3500 MHz
-25 dBc:	1770-1920 MHz
-25 dBc:	2400-2600 MHz
PASSBAND VSWR:	1.5:1 MAX
IMPEDANCE:	50 OHMS
IIP3:	+30 dBm MIN
TEMP:	-20° TO +70°C



Confidential and Proprietary information of ComNav Engineering Inc. Do Not Duplicate or Use Without Permission. ComNav Engineering Inc. claims Copyright in this document as of the Creation, last revision, and last updated dates. All Rights Reserved.

NOTES:

RECOMMENDED ATTACHMENT METHOD: SILVER EPOXY OR REFLOW NOT TO EXCEED AS INDICATED BELOW:

TEMP.(°C)	MAX.TIME(SEC)
215	90
230	60
245	30
260	15

ENGLISH / METRIC ENGLISH		CHECKED BY							
TOLERANCES UNLESS OTHERWISE SPECIFIED		DRAWN BY		PBF					
MACHINED SURFACES TO BE 125 / OR BETTER		ENGINEER		GML		REV		DATE	
REMOVE ALL BURRS		GML		14APR05		GML		DEV.	
								INI. ISS. PER 2361	
								REMARKS	
ENGLISH (INCHES)		METRIC (MM)		SCALE		APPLIC:			
.XX ±.01		.X ±.2		4:1		CERAMIC COAXIAL FILTER			
.XXX ±.005		.XX ±.13		DATE		TITLE:			
ANGLES ± 0° 30'		26APR05		4BCR2E-2135/237-L					
COMNAV ENGINEERING INC		FINISH: BOARD: NICKEL/GOLD JACKET: NICKEL/SILVER				DRAWING No.		SHEET OF	
						OL0584		1 1	