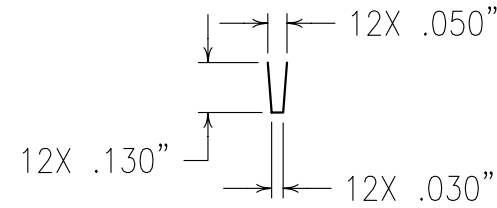
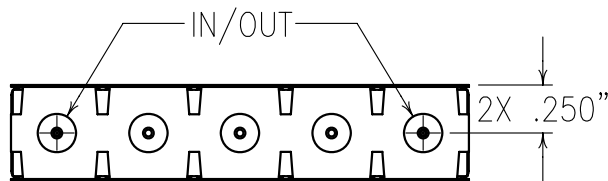


ELECTRICAL SPECIFICATIONS

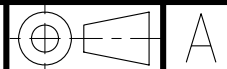
CENTER FREQUENCY:	1090 MHz
INSERTION LOSS:	2.0 dB MAX @ F0
VSWR:	1.5:1 TYP
1 dB BANDWIDTH:	16.0 MHz MIN
GROUP DELAY VAR.:	12 NSEC MAX,
REJECTION:	FROM 1082-1098 MHz
	6 dBc MIN @ 1078 AND 1102 MHz
	40 dBc MIN @ 1065 AND 1115 MHz
	60 dBc MIN @ 1030 MHz
	65 dBc MIN @ 1150 MHz
Vibration:	IAW Mil-E-5400 Fig2, Curve 1
Shock:	IAW Mil-E-5400 Para 3.2.26.6.1, except 15 G's/ 11 milliseconds.
ALTITUDE:	50,000 FT
OPERATING TEMP:	-40 TO +85° C
STORAGE TEMP:	-65 TO +95° C
POWER:	25 WATTS AVE.

COPY



DETAIL A
SCALE 2:1

Confidential and Proprietary information of ComNav Engineering Inc. Do Not Duplicate or Use Without Permission. ComNav Engineering Inc. claims Copyright in this document as of the Creation, last revision, and last updated dates. All Rights Reserved.



NOTES:

FOR RECOMMENDED FOOTPRINT SEE FP0029.
DC: IS ON ONE SIDE ONLY.

ENGLISH / METRIC ENGLISH		CHECKED BY					
TOLERANCES UNLESS OTHERWISE SPECIFIED MACHINED SURFACES TO BE 125 OR BETTER REMOVE ALL BURRS		DRAWN BY		A	24MAR05	SCP	DEV.
ENGLISH (INCHES) .XX ±.02 .XXX ±.010		ENGINEER		II	03MAR05	MJG	DEV.
METRIC (MM) .X ±.25 .XX ±.13		SCALE		REV	DATE	BY	DCN No.
ANGLES ± 0° 30'		APPLIC:		CERAMIC COAXIAL FILTER			
		DATE		TITLE:			
		24MAR05		5BCR12C-1090/20.5-D			
		FINISH: BOARD: TINPLATED COPPER JACKET: NI/SILVER RESONATOR: SILVER		DRAWING No.		SHEET NO/OF	
				0L0578		1 1	

