

COPY

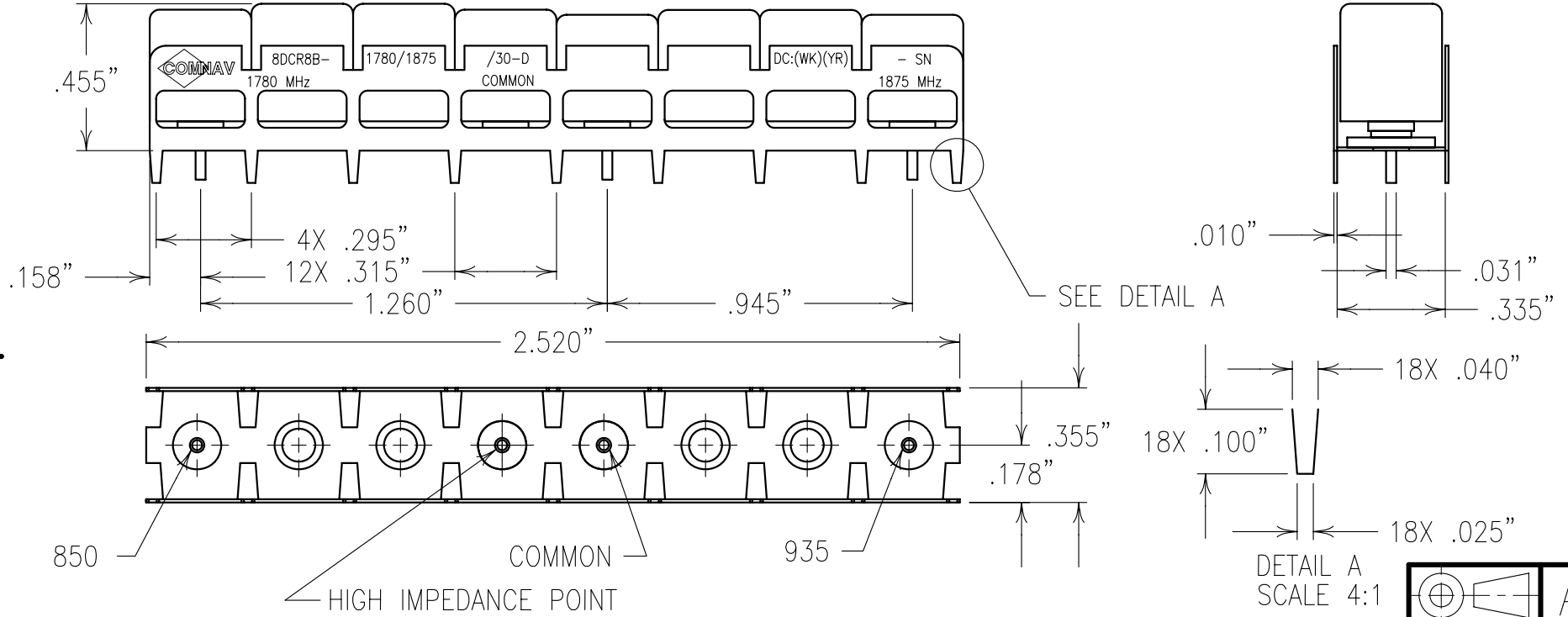
ELECTRICAL CHARACTERISTICS

PORT 1

CENTER FREQUENCY:	1780 MHz
PASSBAND:	1775/1785 MHz
PASSBAND @ 3dB:	30 MHz
INSERTION LOSS:	<1.5 dB
VSWR:	<1.5:1
REJECTION:	
>25 dBc:	1640 MHz
>50 dBc:	1870/1880 MHz

PORT 2

CENTER FREQUENCY:	1875 MHz
PASSBAND:	1870/1880 MHz
PASSBAND @ 3dB:	30 MHz
INSERTION LOSS:	<1.5 dB
VSWR:	<1.5:1
REJECTION:	
>25 dBc:	2015 MHz
>50 dBc:	1775/1785 MHz



Confidential and Proprietary information of ComNav Engineering Inc. Do Not Duplicate or Use Without Permission. ComNav Engineering Inc. claims Copyright in this document as of the Creation, last revision, and last updated dates. All Rights Reserved.

NOTES:

- 1) DC: IS ON ONE SIDE ONLY.
- 2) THERE MUST BE A MINIMUM OF .050 AIR SPACE BETWEEN GROUND AND HIGH IMPEDANCE POINTS. THIS MAY BE ACCOMPLISHED BY RAISING THE FILTER OR DRILLING OUT THE BOARD. FOR RECOMMENDED FOOTPRINT SEE FP0100.

ENGLISH / METRIC ENGLISH	CHECKED BY				
TOLERANCES UNLESS OTHERWISE SPECIFIED MACHINED SURFACES TO BE 125 / OR BETTER REMOVE ALL BURRS	DRAWN BY PBF				
ENGLISH (INCHES) .XX ±.02 .XXX ±.010	ENGINEER MJG	II	04OCT04	MJG	DEV.
METRIC (MM) .X ±.25 .XX ±.13	REVISIONS	REV	DATE	BY	DCN No.
ANGLES ± 0° 30'	SCALE 2:1	APPLIC: CERAMIC COAXIAL FILTER			
	DATE 04OCT04	TITLE: 8DCR8B-1780/1875/30-D			
COMNAV ENGINEERING INC	FINISH: BOARD: TIN PLATED COPPER JACKET: NI/SILVER RESONATOR: SILVER	DRAWING No. 0L0563			SHEET OF 1 1