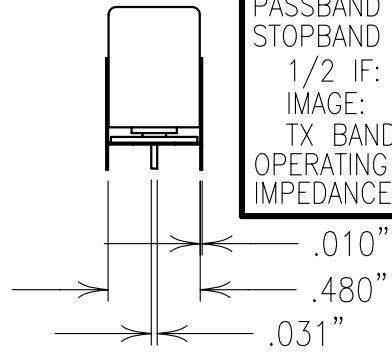
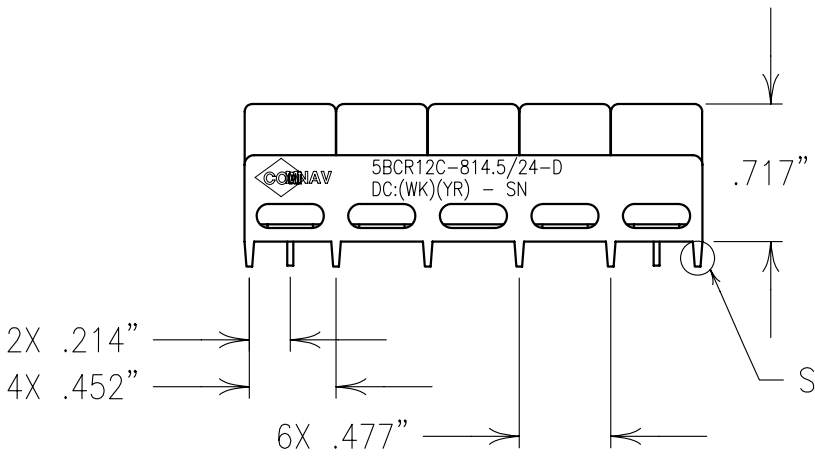
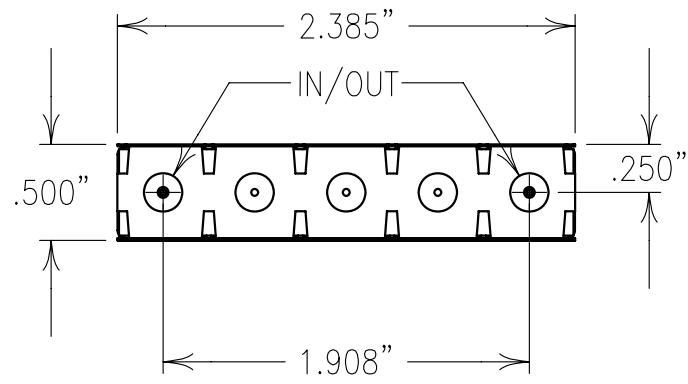


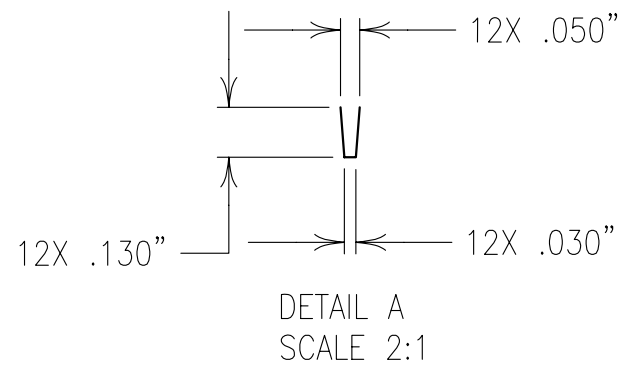
ELECTRICAL CHARACTERISTICS	
CENTER FREQUENCY:	814.5 MHz
PASSBAND FREQ.:	806-825 MHz
PASSBAND ATTEN.:	<1.8 dB
RIPPLE:	<0.75 dB
PASSBAND VSWR:	1.5:1 MAX.
STOPBAND ATTENUATION:	
1/2 IF:	>39 dB @ 770-789 MHz
IMAGE:	>70 dB @ 662-681 MHz
TX BAND:	>50 dB @ 851-870 MHz
OPERATING TEMP.:	-30° TO +75°C
IMPEDANCE:	50 OHMS



SEE DETAIL A



COPY



NOTES:
DC: IS ON ONE SIDE ONLY.
PART MAY BE EXPOSED TO 240°C FOR 30 SEC.,
OR 260°C FOR 15 SEC.
FOR BEST RESULTS HAND OR WAVE SOLDERING IS SUGGESTED.
FOR RECOMMENDED FOOTPRINT SEE FP0076.

Confidential and Proprietary information of ComNav Engineering Inc. Do Not Duplicate or Use Without Permission. ComNav Engineering Inc. claims Copyright in this document as of the Creation, last revision, and last updated dates. All Rights Reserved.				A	
ENGLISH / METRIC ENGLISH	CHECKED BY				
TOLERANCES UNLESS OTHERWISE SPECIFIED	DRAWN BY				
MACHINED SURFACES TO BE 125 / OR BETTER	ENGINEER	II	08OCT03	MJG	DEV. INI. ISS. PER 2121
REMOVE ALL BURRS	ENGINEER	REV	DATE	BY	DCN No. REMARKS
ENGLISH (INCHES)	METRIC (MM)	SCALE	APPLIC: CERAMIC COAXIAL FILTER		
.XX ±.02	.X ±.50	1:1	TITLE: 5BCR12C-814.5/24-D		
.XXX ±.010	.XX ±.25	DATE	DRAWING No. 010485		
ANGLES ± 0° 30'	13OCT03	FINISH: JACKET: NI/SILVER RESONATOR: SILVER PINS: TIN PLATED		SHEET OF 1 1	
COMNAV ENGINEERING INC.				DRAWING No. 010485	