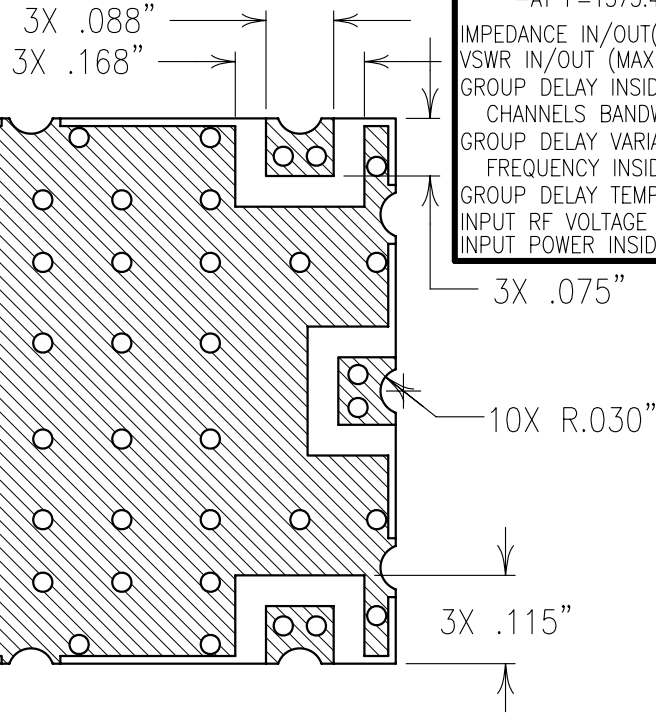
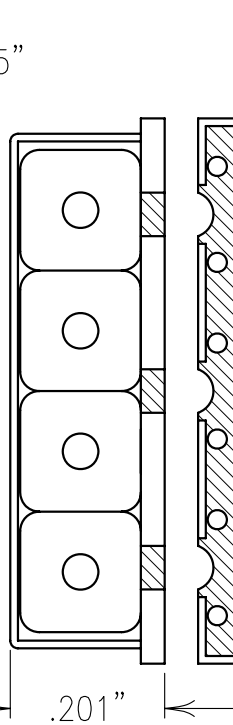
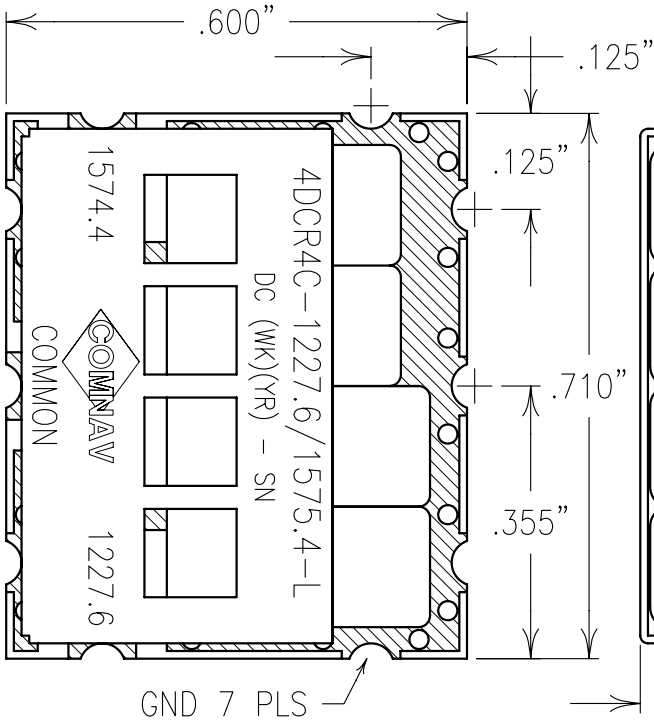
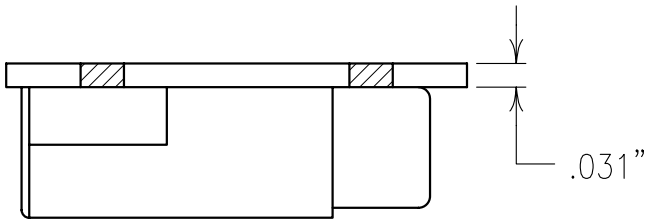


2

1

COPY



| ELECTRICAL CHARACTERISTICS | | |
|---|------------------|------------|
| | CHANNEL 1 | CHANNEL 2 |
| CENTER FREQUENCY | 1575.4 MHz | 1227.6 MHz |
| BANDWIDTH(MIN) | ≥ ±10 MHz | ≥ ±10 MHz |
| INSERTION LOSS(MAX) | ≤ 0.7 dB | ≤ 0.7 dB |
| RIPPLE INSIDE BW(MAX) | 0.5 dB | 0.5 dB |
| OUT OF BAND REJECTION(MIN): | | |
| -AT Fo ±50 MHz: | ≥ 5 dB | ≥ 5 dB |
| -AT Fo ±75 MHz: | ≥ 12 dB | ≥ 12 dB |
| -AT Fo ±300 MHz: | ≥ 33 dB | ≥ 33 dB |
| -AT F=1227.6 MHz: | ≥ 40 dB | - |
| -AT F=1575.4 MHz: | - | ≥ 35 dB |
| IMPEDANCE IN/OUT(NOM) | 50 OHM | |
| VSWR IN/OUT (MAX) | 2.0:1 | |
| GROUP DELAY INSIDE BOTH CHANNELS BANDWIDTH(MAX) | ≤ 15 ns | |
| GROUP DELAY VARIATION VERSUS FREQUENCY INSIDE BW(max) | ≤ 3 ns peak-peak | |
| GROUP DELAY TEMP. GRAD.(MAX) | ≤ T.B.D. ps/°C | |
| INPUT RF VOLTAGE | 1000 V RMS | |
| INPUT POWER INSIDE BW | 30 dBm | |

Confidential and Proprietary information of ComNav Engineering Inc. Do Not Duplicate or Use Without Permission. ComNav Engineering Inc. claims Copyright in this document as of the Creation, last revision, and last updated dates. All Rights Reserved.

NOTES:
 FOR RECOMMENDED FOOTPRINT SEE FP0002.
 RECOMMENDED ATTACHMENT METHOD: SILVER EPOXY
 OR REFLOW NOT TO EXCEED AS INDICATED BELOW:

| TEMP.(°C) MAX. | TIME(SEC) |
|----------------|-----------|
| 215 | 90 |
| 230 | 60 |
| 245 | 30 |
| 260 | 15 |

FILTER IS ROHS COMPLIANT.
 FILTER MAY BE ETCHED OR LABELED.

| | | | | | |
|--|------------|--|---------|-----|-----------------------|
| ENGLISH / METRIC ENGLISH | CHECKED BY | | | | |
| TOLERANCES UNLESS OTHERWISE SPECIFIED | DRAWN BY | A | 09AUG06 | MJG | DEV. |
| MACHINED SURFACES TO BE 125 / OR BETTER REMOVE ALL BURRS | ENGINEER | II | 04JUN98 | SWB | DEV. |
| ENGLISH (INCHES) | SCALE | REV | DATE | BY | DCN No. |
| .XX ±.02 .XXX ±.010 | 4:1 | | | | |
| ANGLES ± 0° 30' | APPLIC: | CERAMIC COAXIAL FILTER | | | |
| | DATE | TITLE: 4DCR4C-1227.6/1575.4-L | | | |
| | 09AUG06 | | | | |
| | FINISH: | BOARD: NI/GOLD JACKET: NI/SILVER RESONATOR: SILVER | | | DRAWING No. 010118 |
| | | | | | SHEET OF 1 1 |