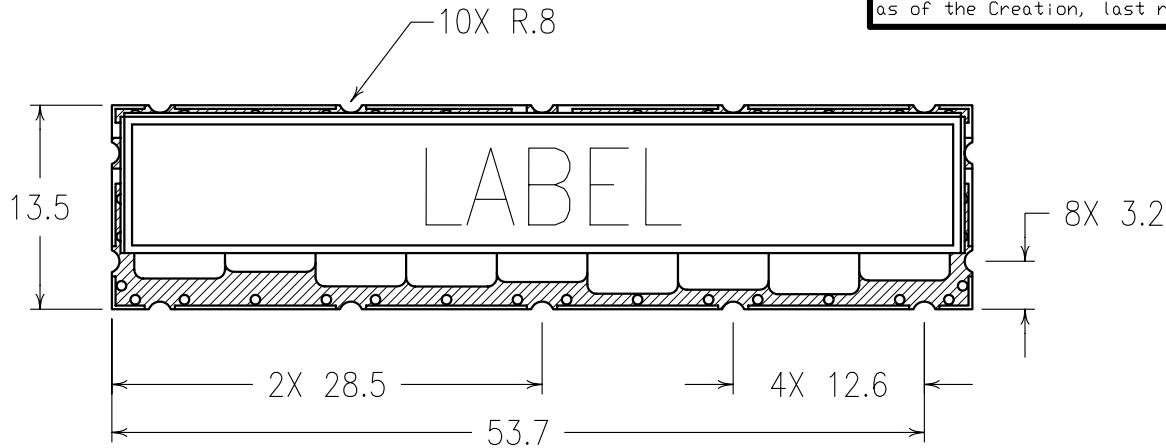


2

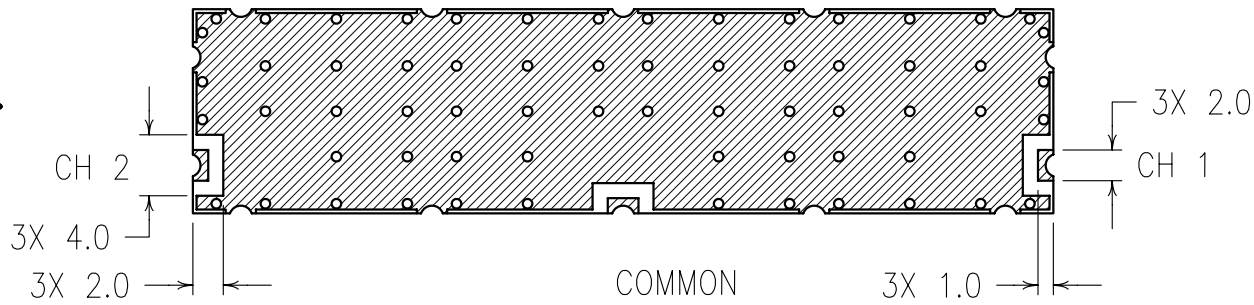
1

Confidential and Proprietary information of ComNav Engineering Inc. Do Not Duplicate or Use Without Permission. ComNav Engineering Inc. claims Copyright in this document as of the Creation, last revision, and last updated dates. All Rights Reserved.

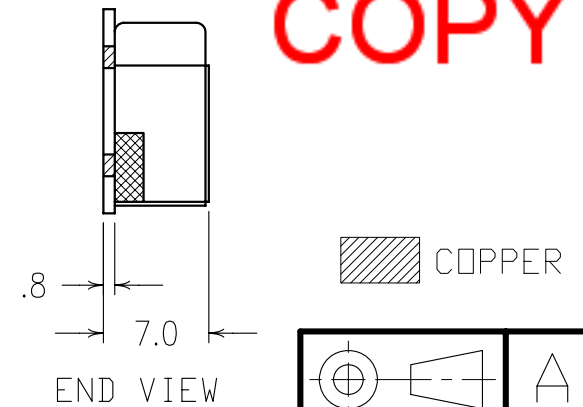


TOP VIEW

ELECTRICAL CHARACTERISTICS		
	CHANNEL 1	CHANNEL 2
CENTER FREQUENCY(fo)	2315 MHz	2385 MHz
PASSBAND	fo ±15 MHz	fo ±15 MHz
50 dB REJECTION	2370-2400	N/A
70 dB REJECTION	N/A	2300-2330
PASSBAND LOSS	3.0 dB	4.0 dB
RIPPLE	0.8 dB	0.8 dB
IMPEDANCE	50 ohms	
VSWR	1.7:1 MAX (1.5:1 GOAL)	
OPERATING TEMP.	-40°C TO +80°C	
INPUT POWER	2 WATTS	



BOTTOM VIEW



END VIEW

COPY

NOTES:

ENGLISH / METRIC METRIC TOLERANCES UNLESS OTHERWISE SPECIFIED MACHINED SURFACES TO BE 125 OR BETTER REMOVE ALL BURRS ENGLISH (INCHES) XX ± .02 .XXX ± .01 METRIC (MM) X ± .25 XX ± .13 ANGLES ± 0° 30'	CHECKED BY					
	DRAWN BY	A	24MAR97	MJG	DEV.	GEN. REV. PER 0215
	ENGINEER	II	28FEB97	MJG	DEV.	INT. ISS. PER 0208
		REV	DATE	BY	DCN No.	REMARKS
	SCALE	APPLIC: COAXIAL FILTER				
	DATE	TITLE: 9DCR6B-2315/2385/30-L				SHEET NO/DF
	24MAR97					1 1
	Material: N/A	DRAWING No.				
	Finish: N/A	0L0024				

